

VBT-8000

Quick Setup. Easy Operation. Precise Control.



**ALL DIGITAL
DISPLAY!**

The VBT-8000 can easily be configured to use plates from other valve body testers!

With today's modern electronically controlled valve bodies, it is important to ensure that the hydraulics and electronics operate within the designed parameters before mounting the unit on the transmission.

The valve body tester simulates the toughest driving conditions while testing electronic, hydraulic, and vacuum systems. The VBT tests valve bodies, solenoids, and pressure switches using the same regulated pressure and heated oil the valve body would use when run in the vehicle.

The VBT is designed to satisfy the test requirements of small transmission rebuilders all the way through high-volume OEM contractors.

Also included is the All NEW SuperShifter PRO, the most advanced and user friendly shift module ever offered. This new design gives you the same controls that you are used to, but with many new enhancements and features.

VBT-8000 Features

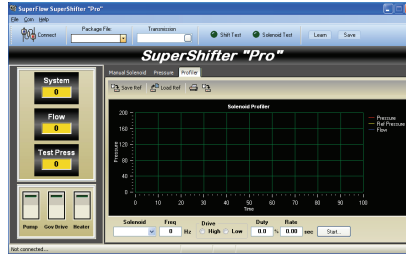
- All Digital Display
- Tests electronic and hydraulic valve bodies & solenoids
- 1,000 psi @ 8gpm operating pressure
- Uses the same regulated pressure and heated oil the valve body would use when run in the vehicle
- Exposes performance degradation caused by small cracks, imperfections, and excessive valve wear
- Removable sides for easy access maintenance
- Complete valve body testing is achieved in minutes
- PID Control of Pressure or Flow

VBT-8000 Options

- WinDyn® control and data acquisition
- Solenoid Leak Testing
 - Test up to 5 solenoids
 - 2 ways to test
 - Flow test
 - High pressure test
- Profiler (solenoid calibration)
- Vacuum pull device
- Governor control (Allison)
- Hydraulic governor control

Features of SuperShifter PRO

- Easy to read on screen displays of pressures
- Individual solenoid controls
- Auto shift mode
- Simple connection from tester to computer
- Learn & save editable shift files
- Modulated frequency and duty cycle
- Digital pressure display



Solenoid test that allows you to see how the solenoid is working hydraulically as you add power. This will show you pressure over time or response time of the solenoid.



Manual interface to control the solenoids and see how the solenoids are being controlled during a shifting sequence. This test can also be used to check for clutch slippage. All sliders can be per-set and then applied at once or simply moved in real time individually.

Axiline Valve Body Tester Specifications

Tank Construction	Steel
Dimensions	52" L x 60" H x 66" W (133 cm x 168 cm x 83 cm)
Weight	
Dry	800 lbs. (818.7 kg)
Wet	900 lbs. (884.5 kg)
Tank Capacity	
Max	17.5 gal
Usable	8.8 gal
Power Requirements	
Option 1	480 volt 3-phase, 11 amps
Option 2	240 volt 3-phase, 22 amps
Option 3	380 volt 3-phase, 15 amps
Motor	7.5 hp (5.5 kW)
Pump	8 GPM (30.3 LPM)
Maximum System Pressure	1,000 psi (6900 kPa)
Filtration	129-micron suction filter, 10-micron pressure side filter
Heater	3kW



AXILINE • HICKLIN • SUPERFLOW • TCRS

1-888-442-5546
www.superflow.com

For information on **Transmission Dynamometers, Transmission Testers, Torque Converter Rebuilding Systems, Driveshaft Rebuilding Equipment and Brake Dynamometers**, contact: 4060 Dixon Street, Des Moines IA 50313
ph: (515) 254-1654 or (888) 442-5546 • fax: (515) 254-1656 • e-mail: products@superflow.com

For information on **Flowbenches, Engine Dynamometers, Chassis Dynamometers, Towing Dynamometers, Dynamometer Software and Data Acquisition and Control Systems**, contact: 4747 Centennial Blvd. Colorado Springs, CO 80919
ph: (719) 471-1746 or (800) 471-7701 • fax: (719) 471-1490 • e-mail: info@superflow.com

Europe: Grensstraat 41A, 2243 Pulle, Belgium
ph: +32 3 4846510 • fax: +32 3 4846520 • e-mail: info@superflow.be