

SUPERSHIFTER

BY SUPERFLOW

TRANSMISSION SHIFT MODULES



WWW.SUPERFLOW.COM

1888.442.5546

AXILINE

• DTS

• HICKLIN

• SUPERFLOW

• TCRS

A DURABLE IN-VEHICLE TESTER

The SuperShifter® in-vehicle tester allows you to shift automatic transmissions in the same manner as the vehicle's computer. This durable unit is designed to handle day-in, day-out professional usage. All components are housed in robust, impact-resistant, environmentally protected enclosures. The SuperShifter® is a complete in-vehicle testing solution that can test 12 solenoids

simultaneously. Source or sink up each solenoid channel for up to three amps and configure for "high-side" or "low-side" drive. Cable and test specifications kits are available for most modern transmissions to make it easy to set up tests. Many of the testing options are user-selectable so you can choose to run simple or comprehensive tests.

The Context Sensitive Keys correspond with on-screen buttons. F1, on this screen, selects 'Test'.

The LED PSW column indicates which pressure switch is being activated.

The LED PRNDL column indicates which PRNDL channel is selected when available.

The TCC/SOL arrow buttons modulate the TCC solenoid in 1% increments from 0-100%.

The EPC arrow buttons modulate the EPC solenoid line pressure in 1% increments for duty cycle from 0-100%.

The SHIFT arrow buttons shift the transmission up and down, one gear at a time.



The Enable button enables the torque converter clutch. Its LED indicates power on.

The Min/Max button allows you to quickly take the Pressure Control Solenoid to its minimum or maximum setting. Press the min/max button and then the down arrow button to take EPC to its min value, or the up arrow button to take EPC to its max value. Its LED indicates Min/Max mode.

The Test button initiates data recording during a test, when available. Its LED indicates data is being recorded.

SUPERSHIFTER® FEATURES

- Has the ability to test most late-model transmissions
- Provides in-vehicle control of the transmission
- Is available with a transmission specification sheet and cable packages that provide comprehensive test information for most modern transmission.
- Includes built-in solenoid current/resistance tests
- Features a rugged design, solid-state electronics, and impact resistant enclosures
- Features a transmission lookup tool that searches by make and model
- Includes an Operator ID and Date/Time stamp on reports
- Can save data to a Universal Serial Bus (USB) drive for post processing, graphing, and reporting.
- Features embedded Bluetooth® technology for external device connectivity.

SPECIFICATIONS

- LCD Graphics Display128 x 64 Pixels
- Real Time clock with battery backup
- Internal / External battery voltage measurements

DATA ACQUISITION AND CONTROL:

INPUT:

- (12) Solenoid current channels
- (12) Solenoid voltage channels
- (8) Analog inputs 0-10 volt
- (4) Frequency input channels 0-10 kHz
(Can be configured for mag pick-up or TTL input.)

- (2) Thermistor input channels for TOT sensors

- (8) Digital input ports

OUTPUT:

- (12) Solenoid Output Channels. Each channel is capable of:
Sourcing or sinkingUp to 3 amps
(With current limited output to protect connected devices)

Software configurable for "High Side" or "Low Side" drive

Current measurement

Voltage Measurement

Pulse width modulation (PWM) From DC to 5 kHz

(4) Analog output ports 0-10 volt

(16) Digital output portsCapable of sinking 500 mA

CONNECTIVITY:

- Ethernet interface10 / 100 MHz
- USB ports allow you to connect to external USB devices like a FLASH drive
- Class II Bluetooth radio interface10 Meter range
- (3) RS-232 Serial COM ports
- (1) CAN interface port

EXPANSION PORT:

- Accepts optional SuperFlow® expansion modules:
16-Channel thermocouple module
8-Channel analog input module
10-Channel pressure module

EXTERNAL DIMENSIONS

- User Interface14-3/4 x 6-3/8 x 1-5/8
(37.5 x 16 x 4.2 cm)

WEIGHT

- User Interface3.3 lbs (1.5 kg)

POWER REQUIREMENTS

-50 / 60 Hz and 110 / 120V Single-Phase

SUPERSHIFTER PRO®

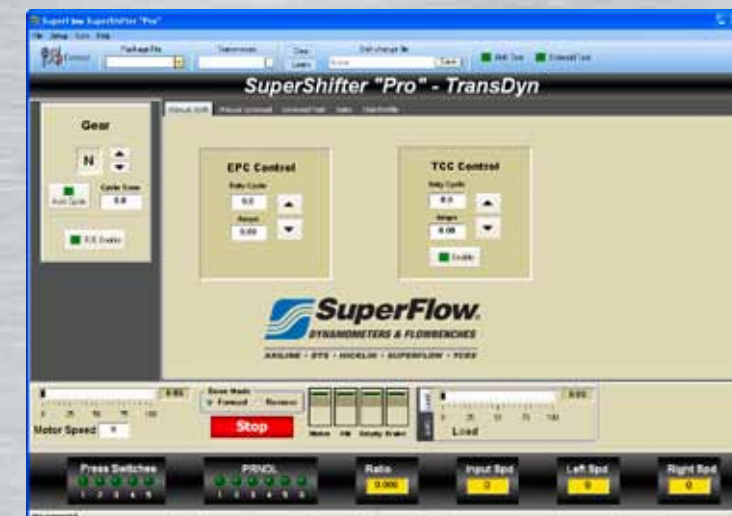
SuperShifter Pro is the most advanced and user friendly shift module we have ever offered. It was designed for extreme versatility so it works with transmission dynamometers, valve body testers or as a stand alone shift console, an advantage that means your technicians only need to learn one software platform to run all SuperFlow transmission test products. SuperShifter Pro puts the user first so its loaded with features like individual solenoid control, click-to-edit frequency ranges and easy-to-read digital displays for pressure, RPM, gear ratios, etc. Because SuperShifter Pro is Windows® based it's simple and easy to learn; it operates like the same programs that we all use everyday. With control of both the machine and the test subject at your fingertips SuperShifter Pro provides everything you need in one thought out and convenient graphical user interface. More importantly, it gives you access to a host of features unavailable on any other system that make testing quick and profitable.



The solenoid profile screen shows the hydraulic characteristics of individual solenoids as you add power. This equates to pressure over time or response time of the solenoid.



The manual solenoid control screen provides manual control or automated review of individual solenoids during shifting. The simple click-to-edit frequency ranges provide fast adjustment of solenoid response. Sliders can be pre-set and applied at once or adjusted real time individually. This screen is also useful for checking clutch slip.



The manual shift screen is the interface to shift transmission or valve bodies. EPC and TCC duty cycle adjustments are also handled on this screen.



The pressure data screen displays up to 20 pressure transducers when hooked to either a valve body or transmission. Individual solenoid control from this screen allows you to see pressure change in one clutch at a time.



The solenoid test screen provides automated hot and cold solenoid pass fail testing. The results include pass/fail condition, which solenoid and it's resistance. Test data is stored in memory for reporting and printing. Test parameters are click-to-edit so setup is quick.

SUPERSHIFTER® CABLE LIST

SUPERSHIFTER® CABLE LIST



- ☞ 3T40, 3L30
- ☞ 4L30 early models
- ☞ 4L30 late models
- ☞ 4L60E
- ☞ 4L80E, 1991 and 1992
- ☞ 4L80E, 1993 and newer
- ☞ 4L80E, 1993 and newer with speed sensors
- ☞ 4T40E, 4T45E, 4T65E
- ☞ 4T60E 1991 through 1993
- ☞ 4T60E 1994 and newer 3.1 and 3.4 litre models
- ☞ 4T60E 1994 and newer 3.8 and 3.9 litre models
- ☞ 4T80E 1994 and newer
- ☞ 5L40E
- ☞ Allison 1000 and 2000 series (5 speed only)
- ☞ Allison 1000 6 speed 4th gen
- ☞ Allison 1000 6 speed 4th gen
- ☞ TAAT (Saturn)
- 
- JAGUAR**
- ☞ 4L80E, 1993 and newer (Customer supplied ends)
- ☞ JF 506

- ☞ 4EAT, Mazda G4AEL
- ☞ 4F27E, Mazda FN4A-EL
- ☞ 4R100, E40D 1995 and newer
- ☞ 4R44E, 4R55E, 5R55E
- ☞ 4R70W
- ☞ 5R110W
- ☞ 5R55N, 5R55S, 5R55W
- ☞ A4LD
- ☞ AODE
- ☞ AX4S early and late models, AX4N early and late models
- ☞ AXODE, 1991 and 1992
- ☞ CD4E
- ☞ E40D, 1994 and earlier
- ☞ F4EAT, Mazda F4AEL



- ☞ 4HP18
- ☞ 4HP22 E7, 4HP22 E9, 4HP24 E7, 4HP24 E9
- ☞ 5HP18
- ☞ 5HP19
- ☞ 5HP24, 5HP30



- ☞ AS68RC
- ☞ 41TE
- ☞ 42LE
- ☞ 42RE, 44RE, 46RE, 47RE, 48RE
- ☞ 42RLE
- ☞ 45RFE, 545RFE
- ☞ 62TE
- ☞ A500, A518



- ☞ WTEC (all 3rd gen)
- ☞ Allison 1000 and 2000 series (5 speed only)
- ☞ Allison 1000 6 speed 4th gen
- ☞ Allison 1000 6 speed 4th gen
- ☞ Allison 3000/4000 4th gen



- ☞ AS450-43LE 2000+



- ☞ AOYA, A24A, A2YA, A4RA, A6VA, APX4, BOYA, MP1A, MPOA, MPXA, PXB4
- ☞ B46A, B4RA, BDRA, M24A, M4RA, M4TA, MDLA, MDMA, S24A, S4RA, SKWA
- ☞ B6VA, M6HA
- ☞ B7TA, B7TA 4spd, B7XA, BAXA,
- ☞ M7ZA, MAXA, MDWA
- ☞ B7WA, BGFA, BGHA, BV6A, BYBA,
- ☞ M7WA, MGFA, MGHA
- ☞ BMXA, SLXA
- ☞ CVT
- ☞ BCLA, BZKA, MCLA, MCTA, MCVA,
- ☞ MDKA, MRMA, MRVA, MZKA



- ☞ RE4F02A
- ☞ AW55/50SN
- ☞ RE4F03A, RE4F04A
- ☞ RE4F03B, RE4F04B
- ☞ RE4R01A
- ☞ RE4R03A



- ☞ 722.6

- ☞ AW4+98
- ☞ AW4-96
- ☞ AW4/97



- ☞ JF506E Landrover Freelander



- ☞ F4AEL, Ford F4EAT
- ☞ FN4A-EL, Ford 4F27E
- ☞ G4AEL, Ford 4EAT
- ☞ G4EAT, GF4AEL



- ☞ VW 09A
- ☞ VW 09G
- ☞ 095, 096, 097, 098, 01M, 01N, 01P



- ☞ KM175-5, KM176, KM177

- ☞ RE4F02A
- ☞ AW55/50SN
- ☞ RE4F03A, RE4F04A
- ☞ RE4F03B, RE4F04B
- ☞ RE4R01A
- ☞ RE4R03A



- SUBARU**
- ☞ 4-EAT (12 pin connector)
- ☞ 4-EAT (16 pin connector)
- ☞ 4-EAT (20 pin connector)



- TOYOTA**
- ☞ A140E, A540E
- ☞ A140E + 92
- ☞ A340E
- ☞ A541E
- ☞ U140E through U241F
- ☞ U340E through U341F



- ☞ Aisin Seiki 450-43LE

SUPERFLOW® DYNAMOMETERS & FLOWBENCHES

SUPERSHIFTER® HANDHELD TRANSMISSION TESTER

SuperFlow® is a global market leader specializing in high-performance automotive testing and rebuilding equipment. Since the early 1970's SuperFlow® products have been used daily by professional engine builders, the military, technical schools, professional race teams, speed shops, transmission rebuilders, universities, and leading automotive manufacturers to produce powerful

and efficient vehicles. Our commitment to providing the best products and service at a great value has given us the opportunity to work with some of the most notable companies in the automotive industry. Come see why thousands of businesses have already chosen SuperFlow® for all of their testing needs.

CALL 1.888.442.5546 for more information on the SuperShifter® Handheld Transmission Tester.

Or visit us at superflow.com



AXILINE • DTS • HICKLIN • SUPERFLOW • TCRS

THE ONLY SOURCE FOR ALL YOUR TESTING NEEDS

- Chassis Dynos
- Engine Dynos
- Transmission Dynos
- Flowbenches
- Solenoid Testers
- Valve Body Testers
- Driveshaft Rebuilding Equipment
- Torque Converter Rebuilding Systems
- Transmission Testers

Manufactured in Colorado Springs, CO and Des Moines, IA U.S.A. Offices Worldwide; Des Moines, IA, Colorado Springs, CO, Pulle, Belgium
For Europe sales & service please call +32-3-4846511 or email info@superflow.be

© 2011 SuperFlow Dynamometers & Flowbenches. All Rights Reserved. ® Registered Trademark of SuperFlow Dynamometers & Flowbenches.

WWW.SUPERFLOW.COM

1.888.442.5546